

BEST CONTACTS FOR YOUR SUCCESS



Telegärtner

KARL GÄRTNER GMBH

NETWORKING COMPONENTS

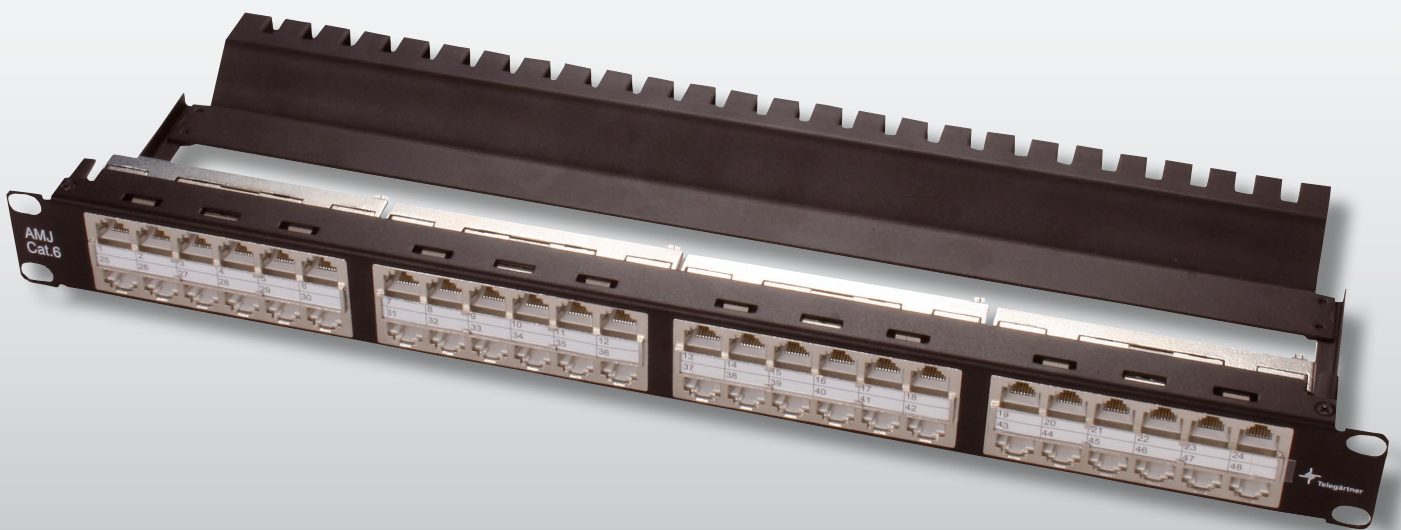
COAXIAL CONNECTORS

CABLE ASSEMBLIES

PRECISION TURNED PARTS

PLASTIC INJECTION MOULD PARTS

INDUSTRIAL ELECTRONICS



19"- Feedthrough Panel with AMJ Coupler Cat.6

19"-Feedthrough Panel with AMJ Coupler Cat.6

It doesn't always need to be glass...

For years, the computer center has been the traditional domain of glass fibre. Developments such as fiber channels from which storage networks (SANs) are constructed or the tradition that new and faster Ethernet versions are always released first for glass fibre systems contributed to this fact.

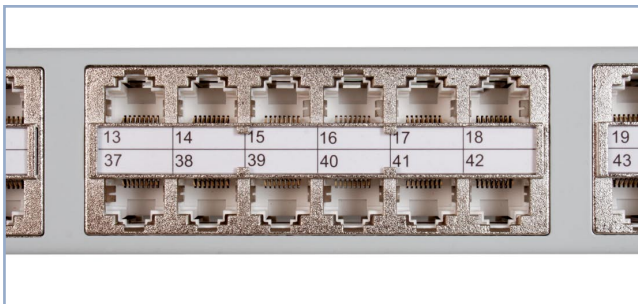
However, it doesn't always need to be glass. Using high quality components, reliable and economical solutions can be created using copper technology – and at a fraction of the cost. However, simply using the best possible products from the area of office wiring quickly leads to a dead end. Computer centers have different framework requirements: a large number of short wiring paths, a well thought-out grounding concept, the highest demands with regard to

reliability, failsafe design and fault tolerance. These are the factors which define the solutions.

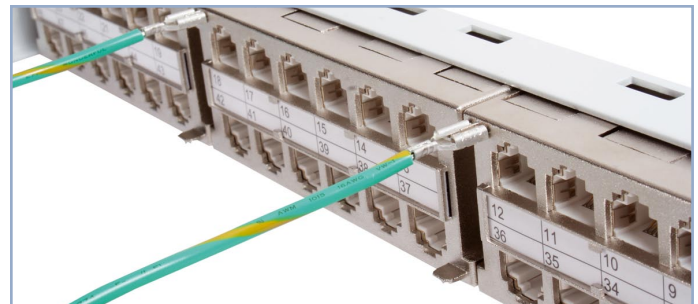
It is with this in mind that the new 19"-feedthrough panel from Telegärtner offers the highest packing density in the smallest amount of space: 48 AMJ couplers in a single unit of height, 12 individual ports combined in a durable, full metal module with appropriate shielding. Each of these 12-port modules comes with its own cable to connect the shielding with the potential equalisation. The advantage: work on one module does not affect the others. The result: a fault tolerant grounding concept. The fact that the data lines are individually supported and have individual strain relief is as much a matter of course as the accustomed high performance expected of Telegärtner solutions.

Performance characteristics

- 19" feedthrough panel incl. 48 AMJ Couplers Cat.6
- Four 12-port modules, each with 12 AMJ Couplers Cat.6
- Individual grounding of each 12-port module using the included ground cable
- Labeling inserts with port numbering included in the standard delivery
- Available in grey RAL 7035 and black
- Strain relief by cable ties (not included) without screws and special tools
- Module carrier: sheet steel powder-coated
- 12-port-modules: zinc diecast
- 19", 1 HU, depth: 153,4 mm



4 full metal modules, each with 12 AMJ Couplers Cat.6



Individual fault tolerant grounding concept for every 12-port module

Order no.	Description
J02024A0007	19"-Feedthrough Panel with 48x AMJ Couplers Cat.6 (4x12), 1 HU, RAL 7035 grey
J02024C0007	19"-Feedthrough Panel with 48x AMJ Couplers Cat.6 (4x12), 1 HU, black
H00030C0007	Dust protection for RJ45 plugs

The matching RJ45 patch cords S/FTP 4x2xAWG27/7 Cat.7 LSZH can be found at www.telegaertner.com